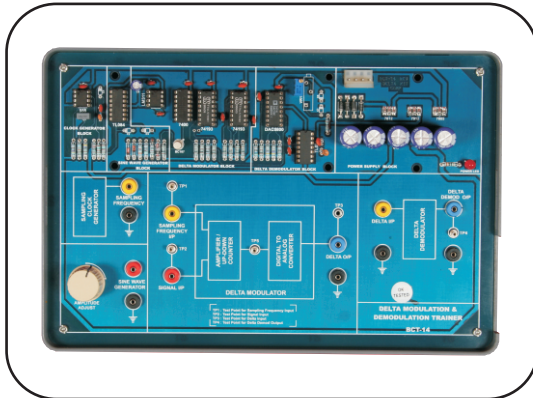


BCT - 14

DELTA MODULATION & DEMODULATION KIT

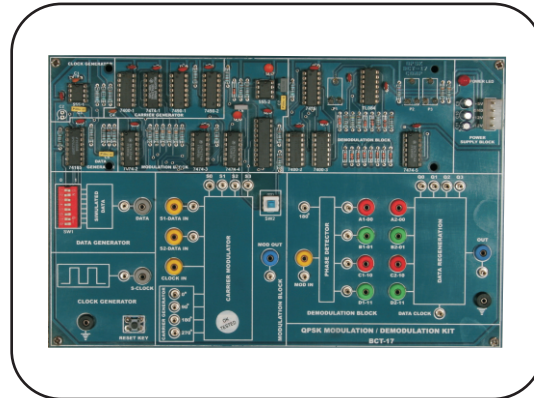


Features

- **Sine Wave Generator**
 - Provides Sine waveform output using IC TI084.
 - Fixed Frequency of 250Hz.
 - Amplitude variable up to Maximum 10V p-p.
- **Sampling Frequency Generator**
 - Provides Square waveform output using IC 555.
 - Provides waveform output of 20 KHz.
- **On-board Block features**
 - DELTA -modulator circuit using IC 74193 UP DOWN Counter and DAC-0800.
 - DELTA-Demodulator using IC TI084.
 - Block Description Screen printed on glassy epoxy PCB.
- **Interconnections**
 - All interconnections are made using 2mm banana Patch cords.
- Test points are provided to analyze signals at various points.
- All ICs are mounted on IC Sockets.
- Bare board Tested Glass Epoxy SMOBC PCB is used.
- In-Built Power Supply of $\pm 5V/150mA$, $\pm 12V/250mA$ with Power ON indication.
- Attractive Housed in ABS Plastic enclosures.
- Set of 2mm Patch cords for interconnections.
- User's Manual with sample experimental programs.

BCT - 17

QPSK MODULATION & DEMODULATION KIT



Features

- **Clock Generator**
 - Synchronous clock generator using IC 555
 - Frequency of square wave is 200 KHz.
- **Carrier Generator**
 - Provides Four quadri-phase carrier output generated using IC 7490.
 - 100KHz (0°), 100KHz (90°), 100KHz (180°), 100KHz (270°)
- **Data Generator**
 - Synchronous data generator using IC 74165
 - Switch selectable simulated data stream.
 - Data stream generated at approx. 1Kb/s rate.
- **On-board Block features**
 - QPSK -modulator circuit.
 - QPSK -Demodulator.
 - Block Description Screen printed on glassy epoxy PCB
- **Interconnections**
 - All interconnections are made using 2mm banana Patch cords.
- Test points are provided to analyze signals at various points.
- All ICs are mounted on IC Sockets.
- Bare board Tested Glass Epoxy SMOBC PCB is used.
- In-Built Power Supply of $\pm 12V/250mA$ with Power ON indication.
- Attractive Housed in ABS Plastic enclosures.
- Set of 2mm Patch cords for interconnections.
- User's Manual with sample experimental programs.

Note : Specifications can be altered without notice in our constant efforts for improvement.